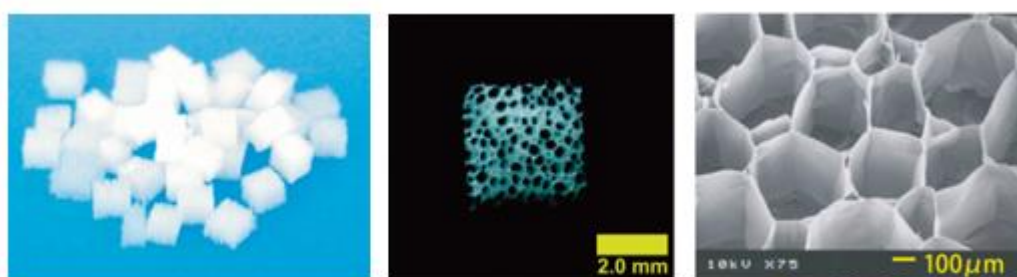


# Atelocollagen, Honeycomb sponge

Catalog Number : AMS.KKN-CSH-96

## OVERVIEW

The 'Honeycomb' collagen sponge has a structure in which uniform pores (250-400  $\mu\text{m}$ ) are arranged densely in one direction, into which cells can penetrate and proliferate. This structure facilitates the ready supply of nutrients to the cells inside the sponge, and releases metabolic wastes and biochemical products. Cells can proliferate and fill the lumen to form a uniform cell mass. The 'Honeycomb' collagen sponge is prepared from highly purified bovine dermal type I Atelocollagen and can be degraded by collagenase.



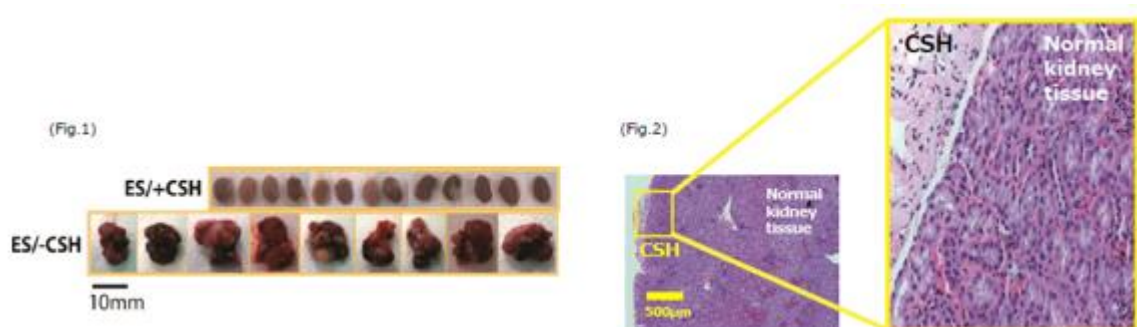
Structure of KKN-CSH-10 Atelocollagen Honeycomb Sponge is shown.

### Suppression of tumorigenesis from transplanted mouse ES cells by cultivation with Atelocollagen Honeycomb Sponge

(M. Yamaki, Matsumoto Dental University, Japan)

Mouse ES cells cultured on honeycomb sponge were transplanted by subcutaneous injection into 6-week-old mice. Although all embryoid bodies without the honeycomb sponge formed tumor without exception, none of the embryoid bodies transplanted with the honeycomb sponge formed tumors (Fig.1).

Histological analysis of transplanted (mouse ES/+CSH) and normal kidney showed no differences between the two tissues. The results indicates normal spontaneous differentiation of the mouse ES cells in the presence of the honeycomb sponge when transplanted *in vivo* (Fig.2).



# SPECIFICATIONS

**Product Name**

Atelocollagen Honeycomb Sponge

**Catalog Number**

AMS.KKN-CSH-96

**Size**

100 mg (bottle)

**Sponge Dimensions**

6 mm diameter × 2 mm sponges

12-13 mg/mL density

200-400 µm pore size

approx. 2000 cm<sup>2</sup>/ g surface area

**Storage and Stability**

Store at Room Temperature

**Sterility**

Sterile

FOR RESEARCH USE ONLY, NOT FOR HUMAN BODY.

AMSBIO | [www.amsbio.com](http://www.amsbio.com) | [info@amsbio.com](mailto:info@amsbio.com)

**UK & Rest of the World**

184 Park Drive, Milton Park  
Abingdon OX14 4SE, UK  
T: +44 (0)1235 828 200  
F: +44 (0) 1235 820 482

**North America**

1035 Cambridge Street,  
Cambridge, MA 02141  
T: +1 (617) 945-5033 or  
T: +1 (800) 987-0985  
F: +1 (617) 945-8218

**Germany**

Bockenheimer Landstr. 17/19  
60325 Frankfurt/Main  
T: +49 (0) 69 779099  
F: +49 (0) 69 13376880

**Switzerland**

Centro Nord-Sud 2E  
CH-6934 Bioggio-Lugano  
T: +41(0) 91 604 55 22  
F: +41(0) 91 605 17 85