

MagSi-NGS^{PREP} Plus

*A Simple and Quick Way to
Consistent NGS Results*

Magnetic bead-based **MagSi-NGS^{PREP} Plus** offers an efficient solution for both size selection and clean-up of the successive enzymatic reactions in library preparation for NGS applications. The simple and flexible protocol can be adjusted to your specific library preparation kit and NGS instrument. MagSi-NGS^{PREP} Plus can be used manually but is also easy to automate for high-throughput processing. In conclusion: a simple and quick way to consistent sequencing results.

High quality results

- High recovery of PCR products
- Excellent removal of enzymes, primers, oligonucleotides, polymerases and other contaminants
- Fragment size selection adjustable between 100 and 1000 base pairs
- Guarantees consistent sequencing results

Simplify your routine

- One product for all clean-up and size selection steps in the library preparation work-flow
- Simple bind-wash-elute procedure with short process time
- Protocol easily adjustable for clean-up or size selection using specific reagent-to-sample ratios
- Manual and automated use
- Compatible with standard protocols of common library preparation kits

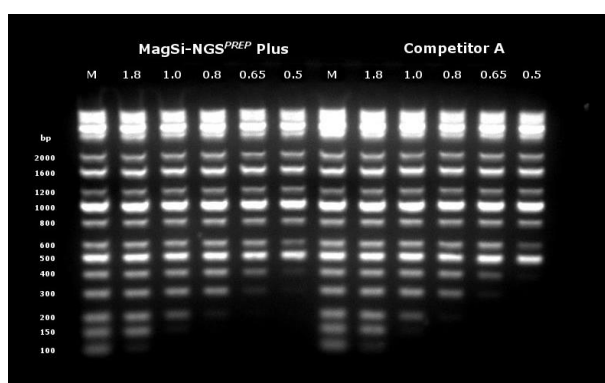


Fig 1. Gel electrophoresis of DNA ladder at different reagent:sample volume ratios

Easy to automate

- Identical protocol as competitor magnetic beads Agencourt AMPure XP®
- Optimized for use on Biomek® Laboratory Automation Workstations and Hamilton® Microlab STARline
- Compatible with many different automated liquid handling systems (e.g. PerkinElmer®, Agilent Technologies®)
- Optimized separation performance using magnetic separators for 96 and 384 wells PCR plates



96 well PCR plates

Art. No.	Product	Volume
MDKT00010005	MagSi-NGS ^{PREP} Plus	5 mL
MDKT00010075	MagSi-NGS ^{PREP} Plus	75 mL
MDKT00010500	MagSi-NGS ^{PREP} Plus	500 mL
MD90001	MM-Separator M12 + 12	
MD90002	MM-Separator M96	
MD90005	MM-Separator 96 SBS	
MD90006	MM-Separator 384 SBS	

AMSBIO | www.amsbio.com | info@amsbio.com

 **UK & Rest of the World**
184 Park Drive, Milton Park
Abingdon OX14 4SE, UK
T: +44 (0)1235 828 200
F: +44 (0) 1235 820 482

 **North America**
1035 Cambridge Street,
Cambridge, MA 02141
T: +1 (617) 945-5033 or
T: +1 (800) 987-0985
F: +1 (617) 945-8218

 **Germany**
Bockenheimer Landstr. 17/19
60325 Frankfurt/Main
T: +49 (0) 69 779099
F: +49 (0) 69 13376880

 **Switzerland**
Centro Nord-Sud 2E
CH-6934 Bioggio-Lugano
T: +41(0) 91 604 55 22
F: +41(0) 91 605 17 85